

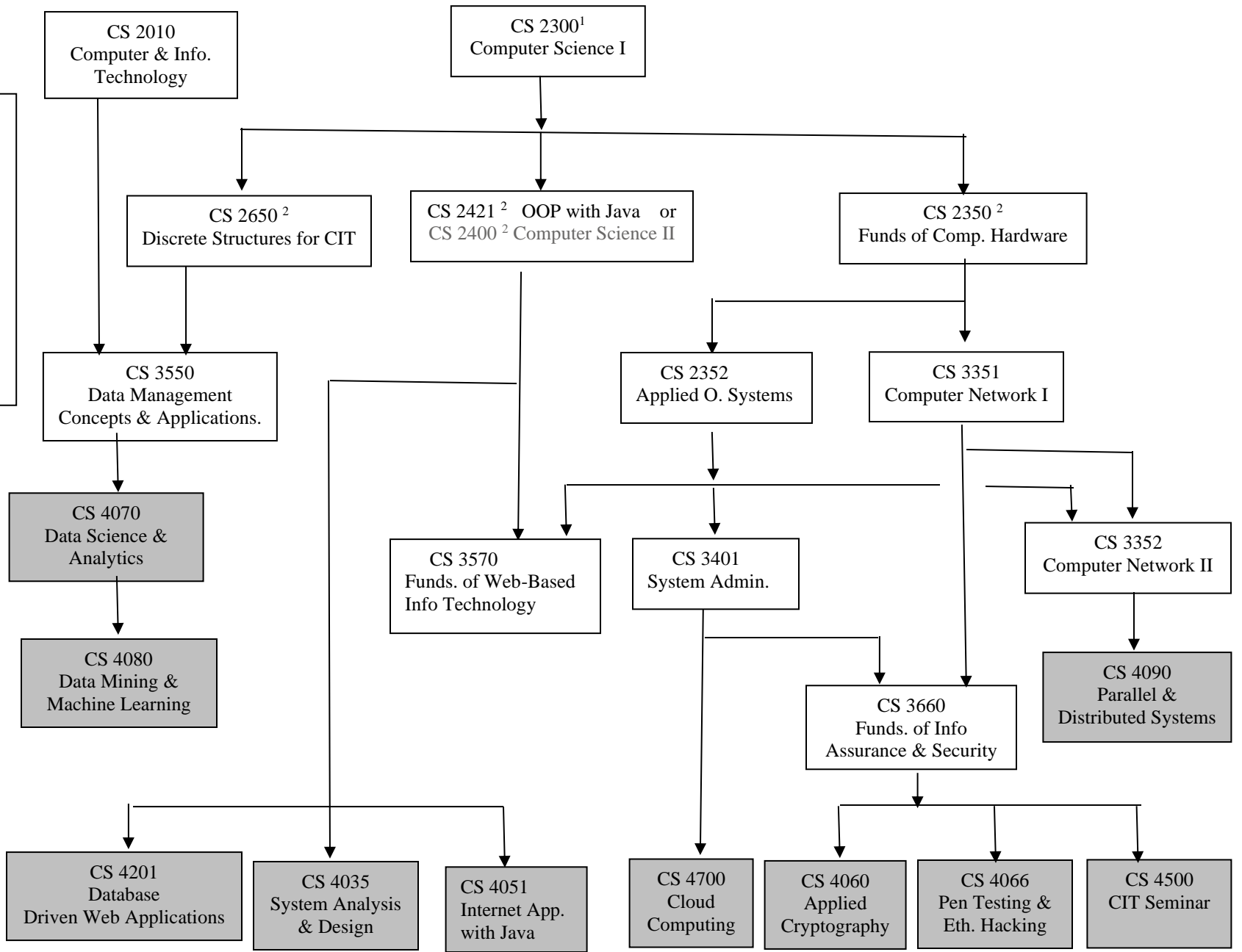
required course

elective course

A grade of C- or better is required for any course that is a pre-requisite of another course.

- Requires MATH 1150 or MATH 1350
- Requires MATH 1160 or MATH 1350

COMM 1100 & ENG 1100 are required for any CS course 3000-level or higher.



Other CIT Courses:

CS 3990
Selected Topics

CS 3950
CIT/CIS Internship

For CS 3950 an application must be submitted and approved by the department Curriculum Committee.