

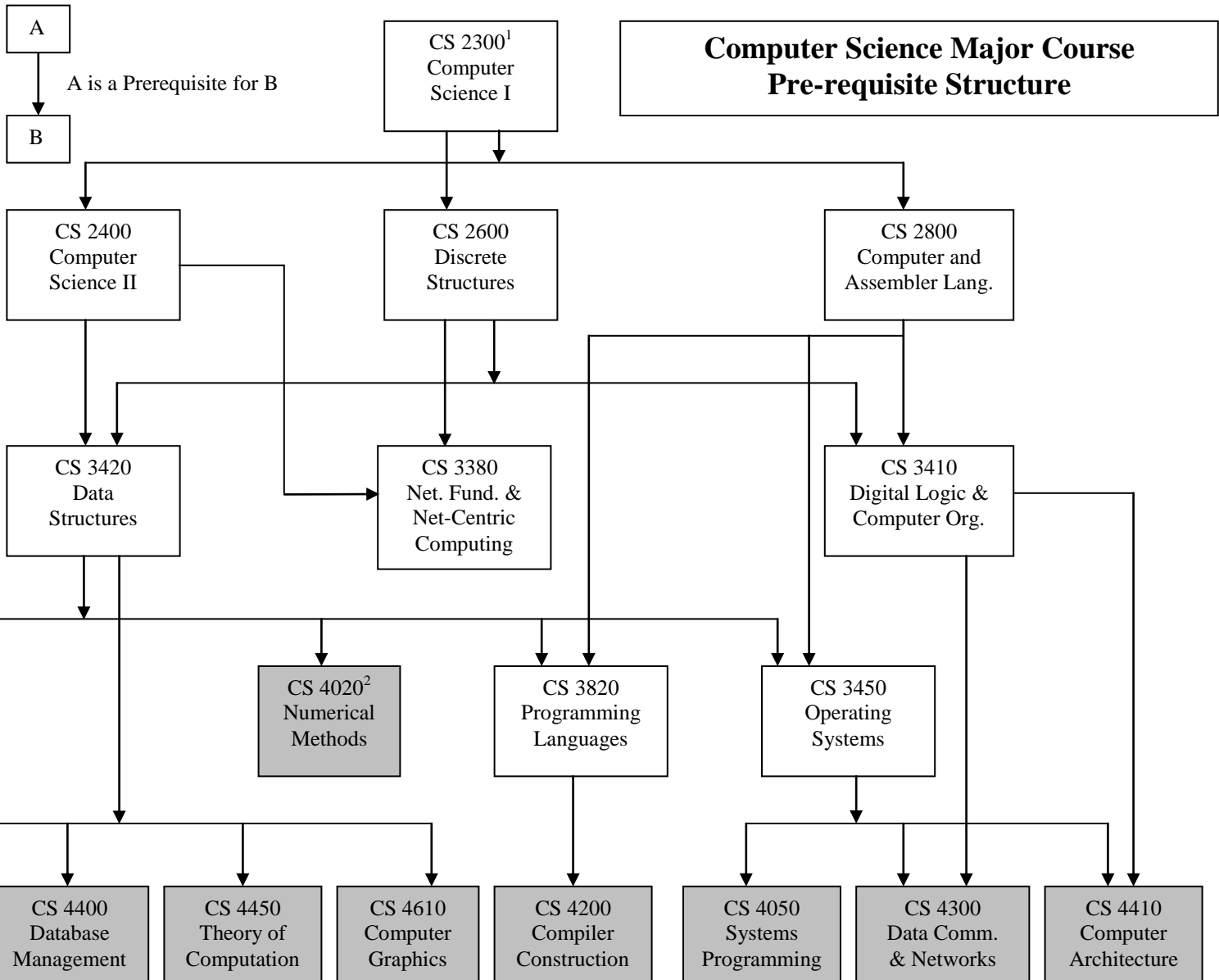
Required course

Elective course

A grade of C- or better is required for any course that is a pre-requisite for another course.

1. Requires MATH 1150 or MATH 1350
2. Requires MATH 1600 & MATH 1610
3. Requires MATH 3240

COMM 1100 & ENG 1100 are required for any CS course 3000-level or higher.



Computer Science Major Course Pre-requisite Structure

CS 3990
Selected Topics

CS 4800
CS Seminar

CS 4900
CS Senior Project

CS 4950
Internship

CS 4990
Independent Study

CS 3990 requires junior standing.
 CS 4800 requires senior standing.
 CS 4900 requires 3.5 GPA or better and Departmental approval.
 CS 4950 requires 3.0 GPA or better and Departmental approval.
 CS 4990 requires 3.0 GPA or better, senior standing and approval of advisor, Department Chair, and Dean of College of Science & Health.